



Dialogue on Risk Management in Wine Trade

5-6 November, 2012 - Auckland, New Zealand

Inspection System of Imported Alcohol

Huimin, Ho
National Treasury Agency, MOF
Chinese Taipei

Purpose of Imported Alcohol Inspection

- Strengthen the management of alcohol hygiene
- Assert the rights of alcohol importers
- Protect consumers' safety



Regulations

- The Regulations Governing the Inspection of Imported Alcohol
- The Tobacco and Alcohol Administration Act
- The Enforcement Rules of the Tobacco and Alcohol Administration Act
- The Hygiene Standards for Alcohol Products
- The Regulations Governing the Labeling of the Alcohol Products



Regulations Governing the Inspection of Imported Alcohol

- Article 2
 - The hygiene of imported alcohol shall be in conformity to the standard hygiene requirements and relevant stipulations prescribed jointly by the central competent authority and the central competent health authority.



Hygiene Requirements for Alcohol Products

Hygiene items	Category of Alcohol Product	Limitation
Methyl alcohol	Alcoholic beverages	1,000-4,000 mg/L (100% ethyl alcohol)
Lead	Alcoholic beverages	0.3 mg/L
Sulphur dioxide	Alcoholic beverages brewed from fermented fruits	0-0.4 g/L
Sorbic acid	Alcoholic beverages brewed from fermented fruits	0.2 g/L
Benzoic acid	Alcoholic beverages with an alcohol content of 15% or less	0.4 g/L
Lutein	Alcoholic beverages	10 mg/L
Other additives	Alcoholic beverages	<p>Shall not have the following:</p> <ol style="list-style-type: none"> 1. Toxic or any other substances/matter harmful to human health. 2. Never been used on food/beverages and have not yet been proven to be harmless to human health.



Mandatory inspection items

- Mandatory inspection items for imported alcohol include :
 - Methyl alcohol
 - Lead
 - Sulphur dioxide
- Inspection items will be adjusted in accordance with the nature of the products, inspection results over the years, international information related to hygiene, and prevention of infectious diseases



Mandatory inspection items by alcohol category

Alcohol category		Inspection items
1. Beer		Sulphur dioxide
2. Fruit wine	Grape wine	Sulphur dioxide
	Other fruit wine	Methyl alcohol, Lead, Sulphur dioxide
3. Beverages brewed from grains		Methyl alcohol, Lead, Sulphur dioxide
4. Other brewed alcoholic beverages		Methyl alcohol, Lead, Sulphur dioxide
5. Distilled spirits	Brandy	Methyl alcohol
	Whisky	Methyl alcohol
	Clear spirits	Methyl alcohol, Lead
	Rice spirits	Methyl alcohol, Lead, Sulphur dioxide
	Other distilled spirits	Methyl alcohol
6. Reprocessed alcoholic beverages		Methyl alcohol, Lead
7. Cooking alcohol		Methyl alcohol, Lead, Sulphur dioxide
8. Ethyl alcohol		Methyl alcohol, Lead
9. Other alcoholic beverages		Methyl alcohol, Lead, Sulphur dioxide



Inspection System

- Timeline :
 - 2006/01/01~2006/06/30
 - Beer and brewed alcoholic beverages other than grape wine
 - From 2006/07/01 on
 - All kinds of alcoholic beverages must go through inspection
- Inspection types
 - Lot-to-lot inspection
 - Under specific situations
 - Lot-sampling inspection
 - The percentage of selected for inspection is no less than 5%
 - Documentary examination



Documentary examination

- 1. Alcohol products previously inspected and passed for qualification with the same importer, brand name, origin, alcohol content, product category, packaging material and manufacturer.
- 2. Products go through lot-sampling inspection type but are not selected for inspection.



Documentary examination

- 3. The alcohol products accompanied by test reports, inspection certificates, or relevant examination and verification certificates:
 - (1) The inspection report provided by a laboratory recognized by the ILAC, or issued by a foreign governmental agency/institute or a laboratory accredited by such governmental agency/institute.



Documentary examination

- (2) The test report or guaranty issued by the competent governmental authority (ies) or professional alcohol associations of the original/exporting countries of those alcohol products categories announced by the central competent authority to verify that the alcohol indeed belongs to the announced product category and it is also in conformance with the standard hygiene requirements detailed in Taiwan in the test reports or guaranties mentioned above.



Documentary examination

- (3) The self-certifications issued by producers or exporters to show their conformity with Taiwan hygiene standards for the grape wines accompanied by a statement filed by the importers of such wines that the grape wines are in conformity with the stipulations for excellent quality wines in the regulations of the country of origin.



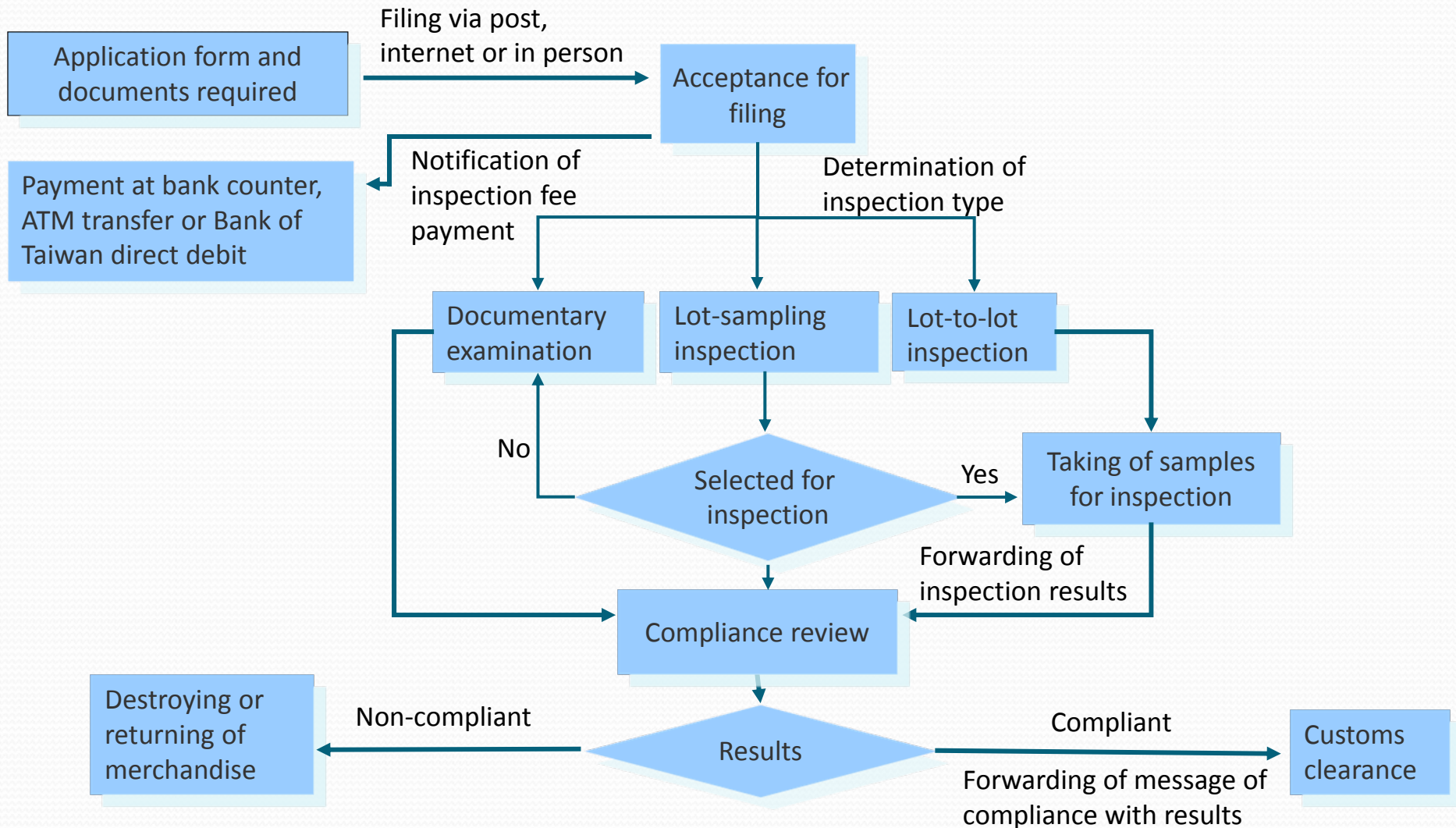
Inspection Process of Imported Alcohol

Alcohol Importer

NTA, MOF

BSMI

Customs



Features of Inspection System

- The inspection system is fully web-based:
 - The importers can login to the system to apply for imported alcohol inspection.
 - The importers can easily review the progress of their application on line.
 - All messages are sent to the related authorities in real time.
 - Once the inspection is completed, the system will automatically forward the results to Customs for clearance.



Thank you!



Dialogue on Risk Management in Wine Trade

5-6 November, 2012 - Auckland, New Zealand